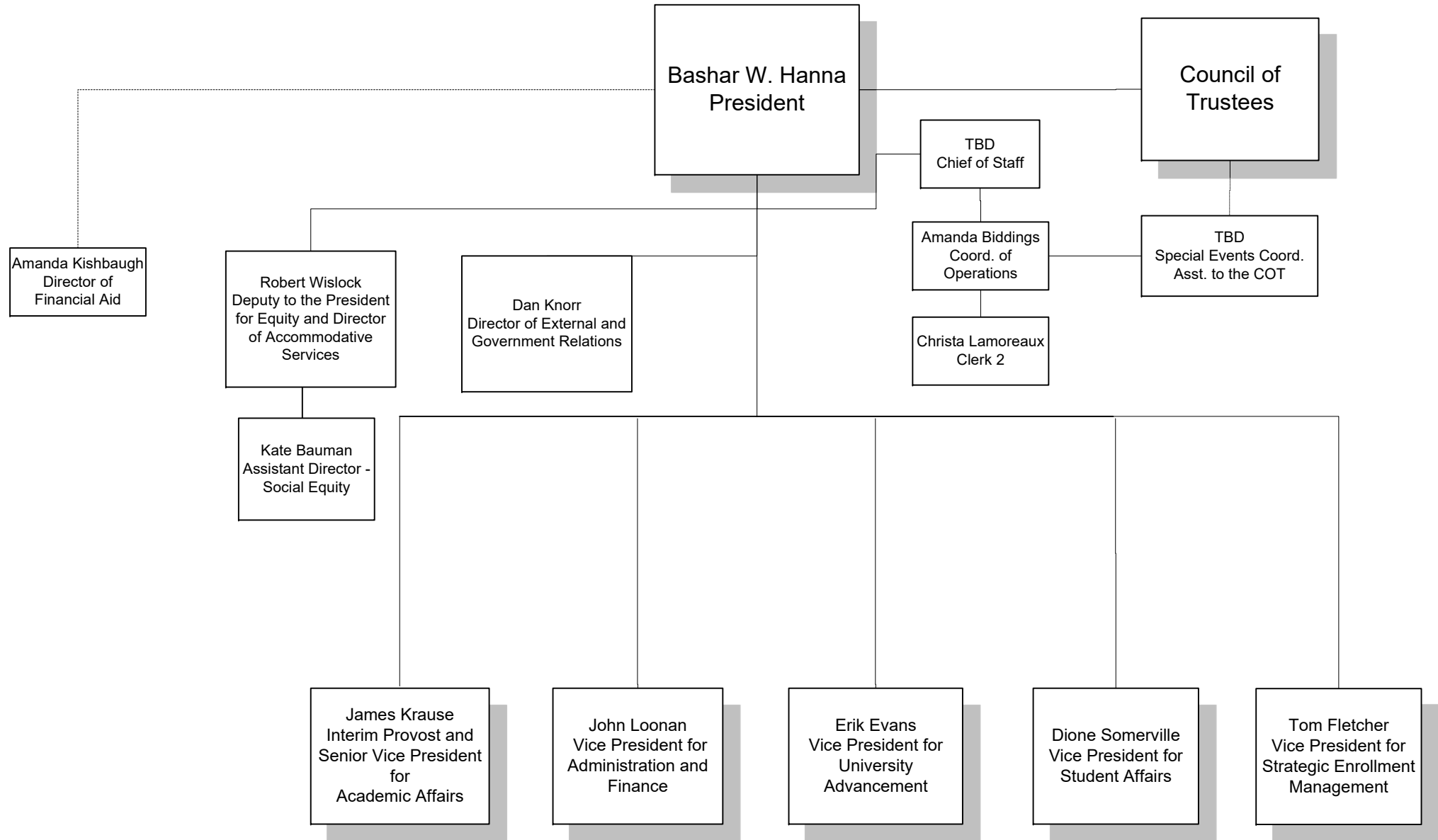
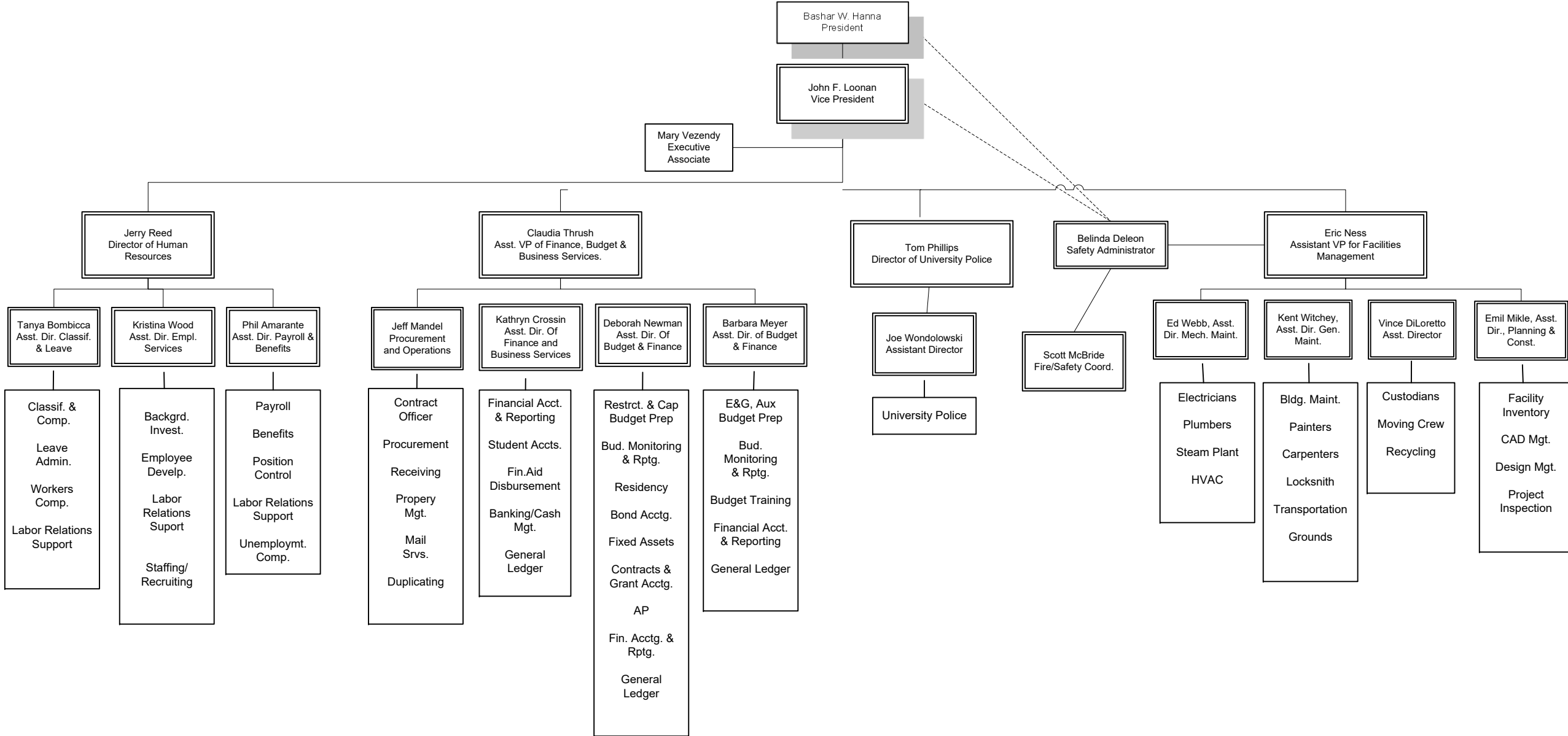


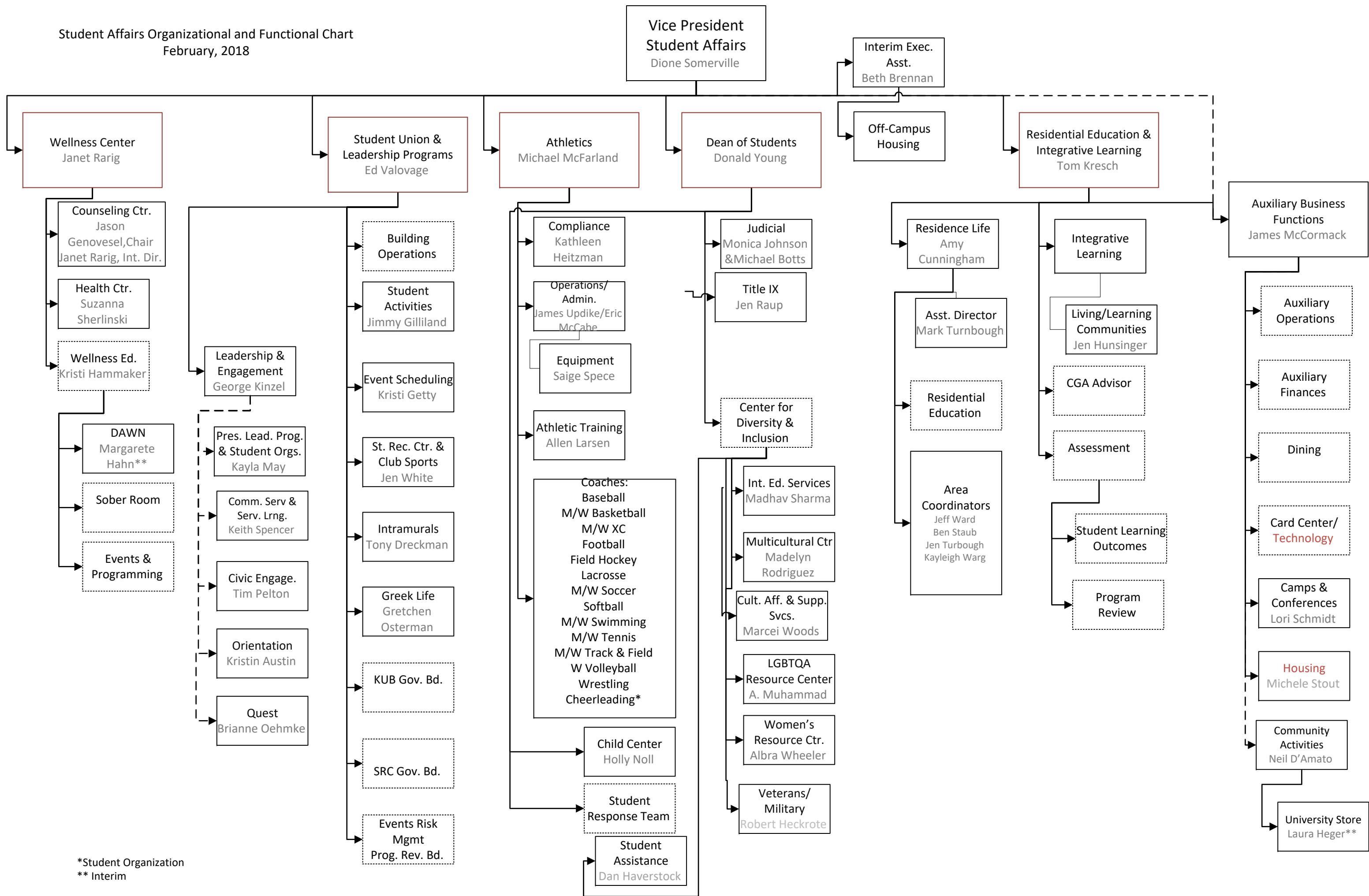
Bloomsburg University
Office of the President
February 13, 2018



Division of Administration and Finance
February 6, 2018



Student Affairs Organizational and Functional Chart
February, 2018



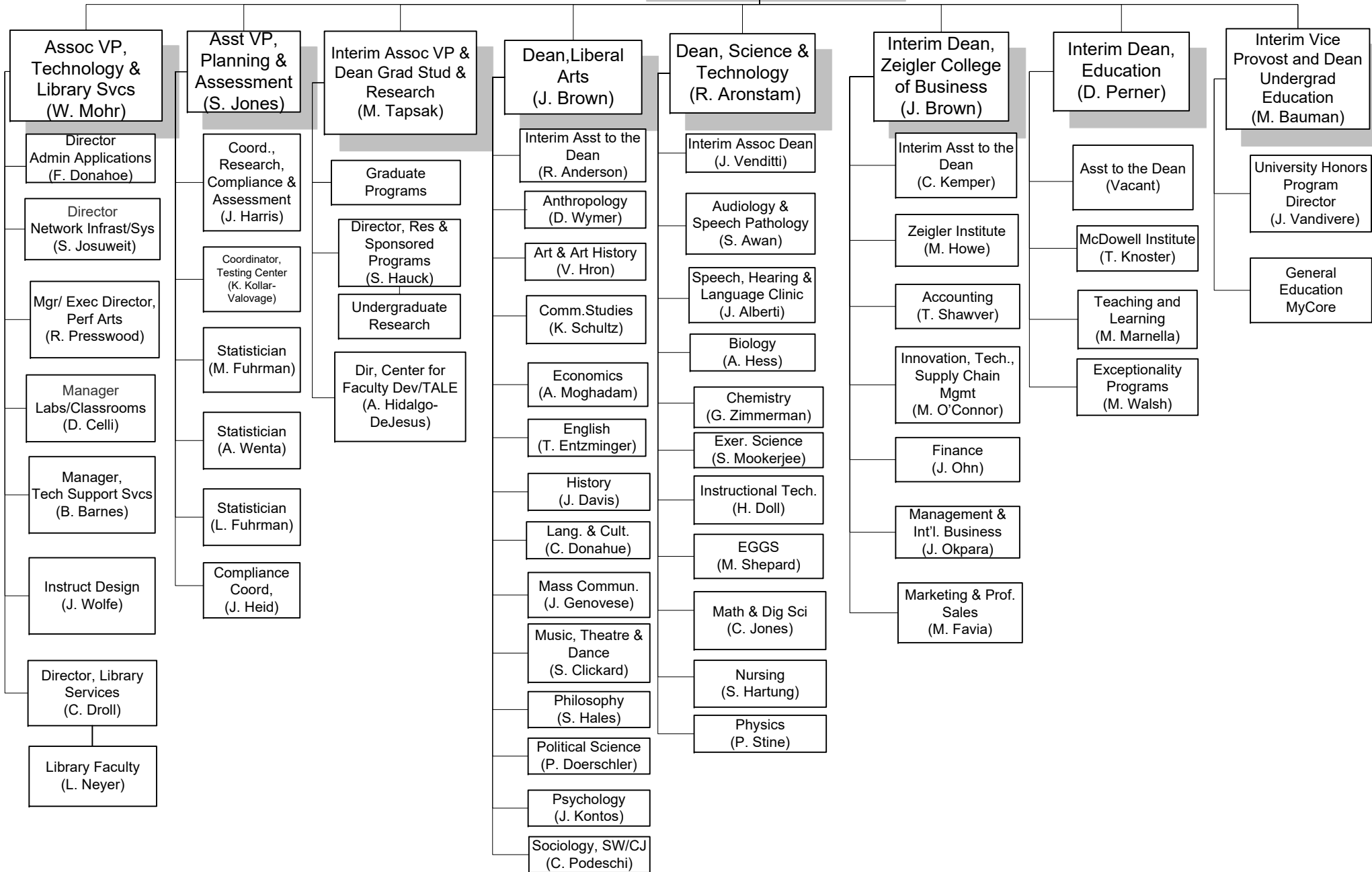
*Student Organization
** Interim

**Academic Affairs - Organization and Functional Chart
February, 2018**

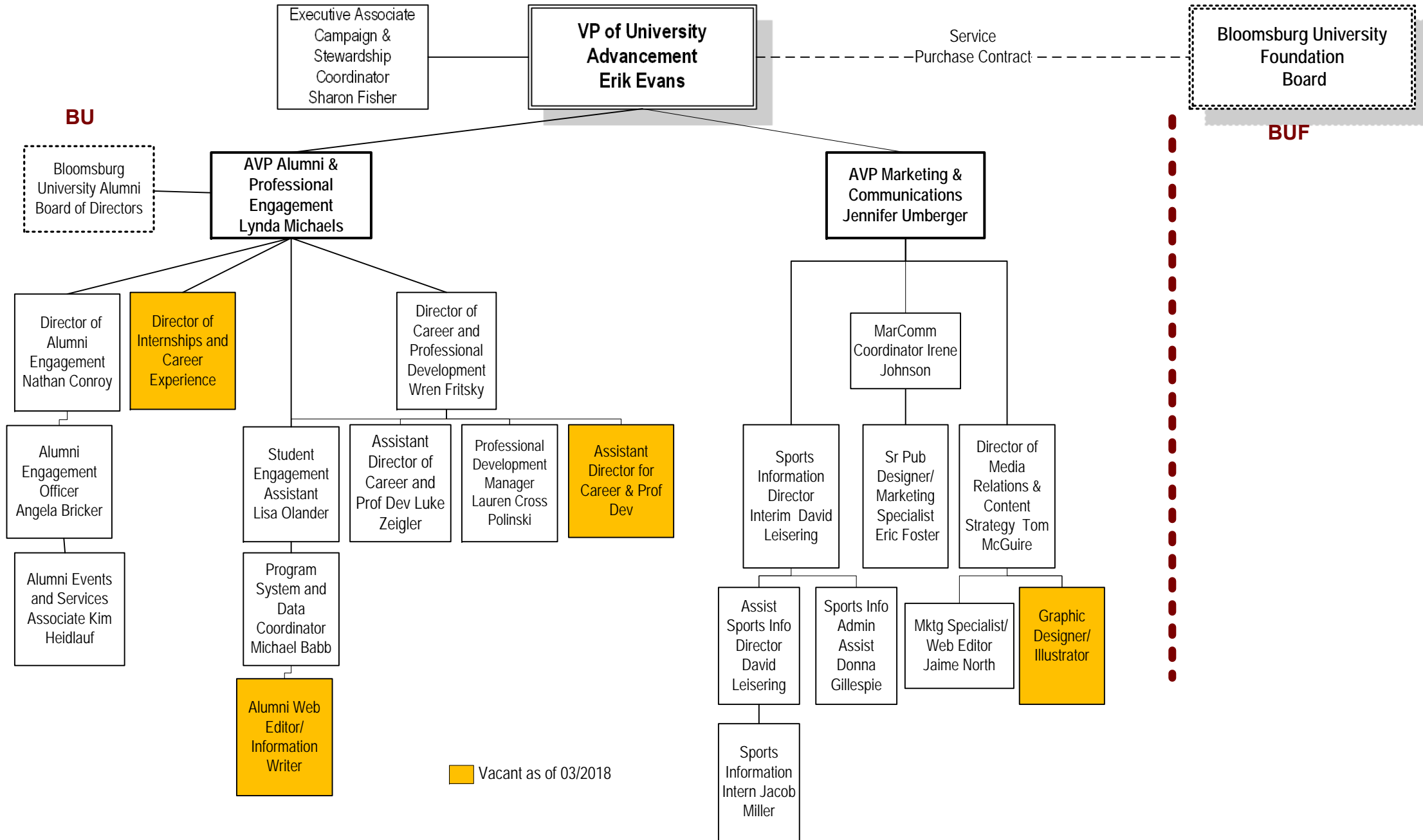
**President
(Bashar W. Hanna)**

**Interim Provost & Senior Vice-
President for Academic Affairs
(James K. Krause)**

**Asst to Provost
(Amy Osborne)**



Bloomsburg University Advancement Fully Staffed Organizational Chart as of 02/16/2018



Bloomsburg University of Pennsylvania
Department of Equity and Accommodations

Organizational Chart
 February, 2018

