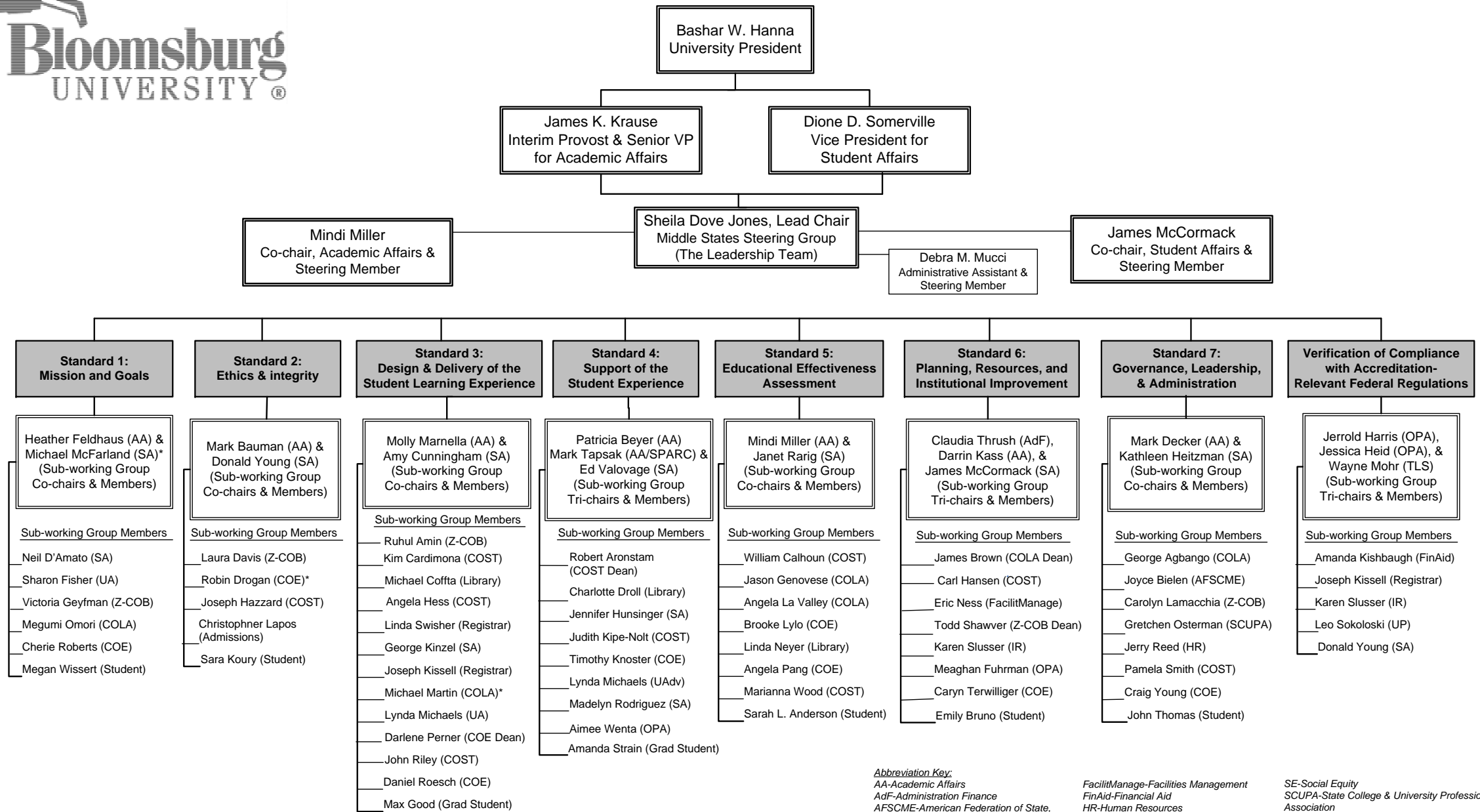




2018-2019 MIDDLE STATES SELF-STUDY – ORGANIZATIONAL & FUNCTIONAL CHART



Abbreviation Key:
 AA-Academic Affairs
 AdF-Administration Finance
 AFSCME-American Federation of State,
 County and Municipal Employees
 COE-College of Education
 COLA-College of Liberal Arts
 COST-College of Science and Technology
 DisEd-Distance Education

FacilitManage-Facilities Management
 FinAid-Financial Aid
 HR-Human Resources
 Inst.Media-Instructional Media
 IR-Institutional Research
 IT-Instructional Technology
 OPA-Office of Planning and Assessment
 SA-Student Affairs

SE-Social Equity
 SCUPA-State College & University Professional
 Association
 SPARC-Strategic Planning & Resource Council
 TLS-Technology & Library Services
 UAdv-University Advancement
 UP-University Police
 Z-COB-Ziegler College of Business