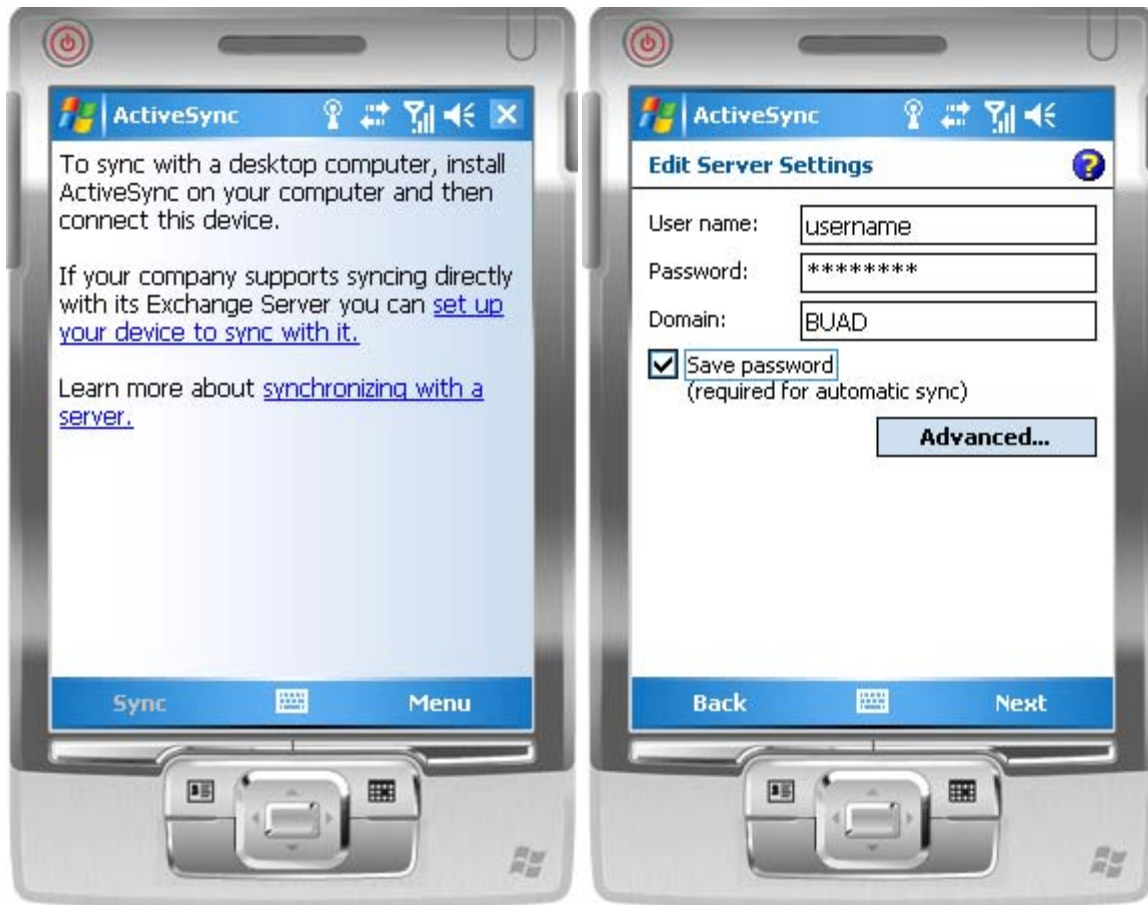


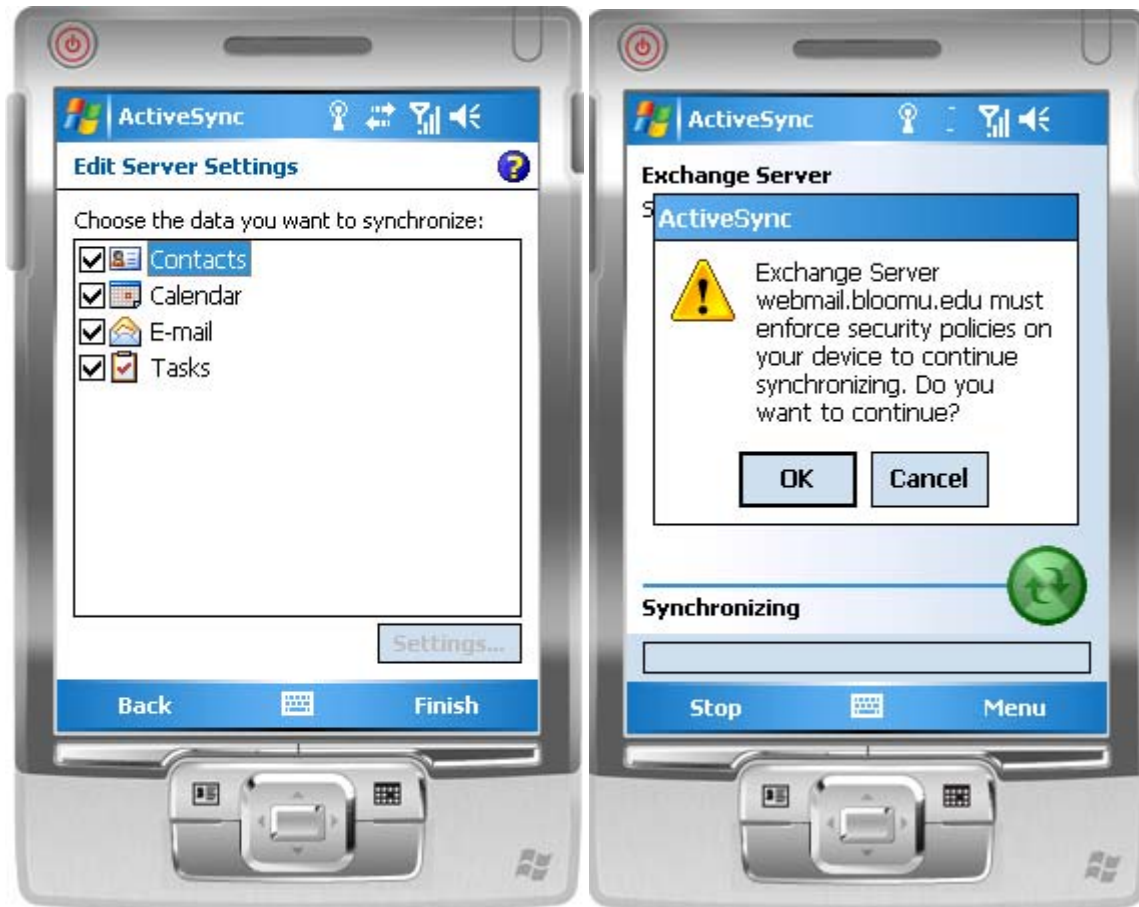
Windows Mobile 5 Exchange Setup Instructions



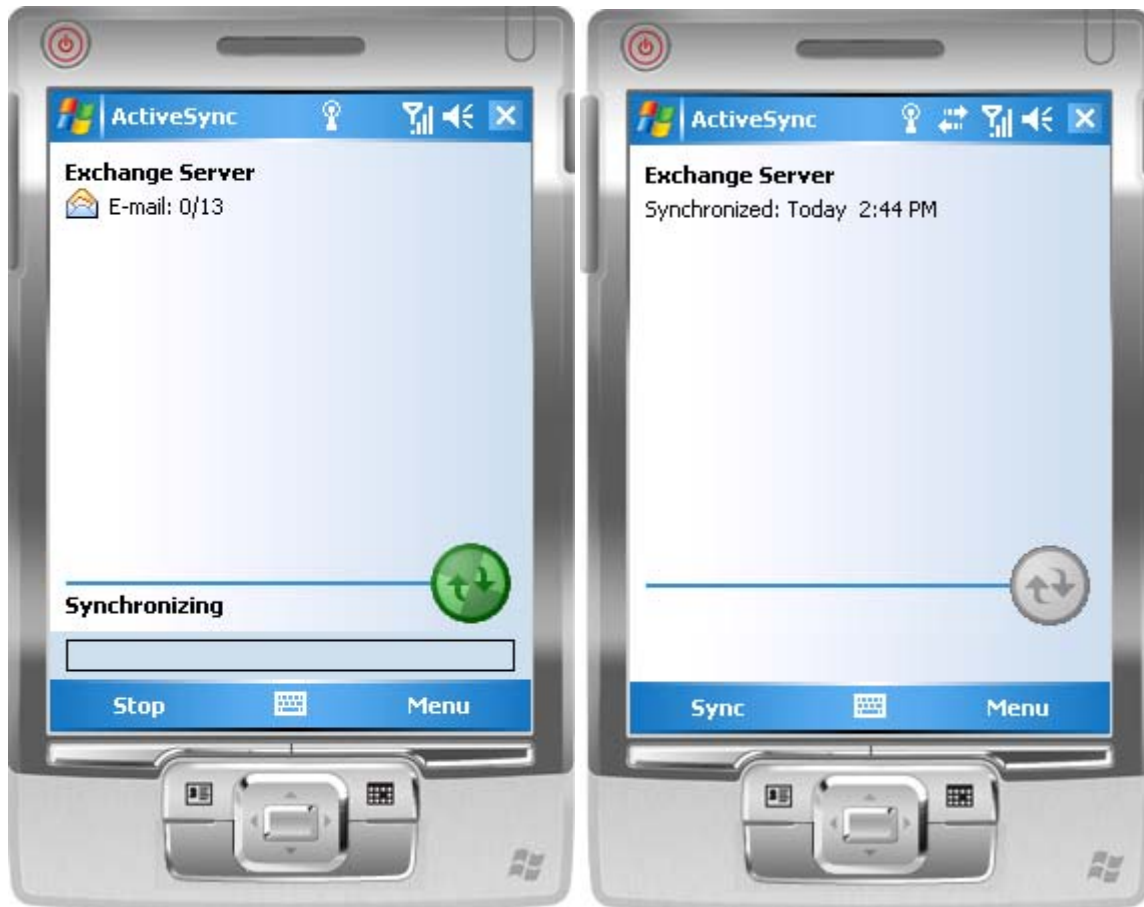
To begin, open up ActiveSync. You can find it by clicking Start, Programs, and then the ActiveSync icon.



Next, you want to click on the link that says *Set up your device to sync with it.* On the next screen, enter your username, password, and *BUAD* for the domain. You also need to make sure the *Save Password* box is checked otherwise it won't automatically sync for you. Click the *Next* button.



On this screen, the default options are already selected, so simply click *Finish*. As it begins syncing, you will get a message about enforcing security policies. Click *OK* to continue syncing.



It will show you the progress as it's going, then once it's done, you can click the X in the top right corner to exit.