


Slide 1

CHE MSA MIDDLE STATES COMMISSION ON HIGHER EDUCATION




Heather Perfetti, J.D., Ed.D.
Vice President
Middle States Commission on Higher Education

Slide 2

Accreditation, Briefly:
Middle States Commission on Higher Education

- ~530 Member and Candidate Institutions
- Region includes New York, New Jersey, Pennsylvania, Delaware, Maryland, District of Columbia, Puerto Rico, US Virgin Islands, and 19 international institutions
- Headquartered in Philadelphia, PA with a staff of 31
- 26 Commissioners



Western Association of Colleges & Schools
Northwest Commission on Colleges & Universities
North Central Association of Colleges & Schools
Southern Association of Colleges & Schools
Public State Association of Colleges
& Schools, Commission on Higher Education
New England Association of Schools & Colleges

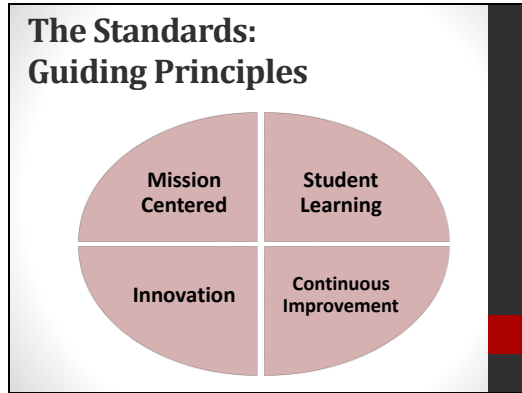
Slide 3

Accreditation:
Quality Assurance, Institutional Improvement & Accountability

- ✓ Provides quality assurance for students, parents, and general public;
- ✓ Serves as gatekeeper for Title IV funding;
- ✓ Verifies compliance with all federal accreditation-relevant regulations and requirements.

▶ The Middle States Commission on Higher Education assures students and the public of the educational quality of higher education. The Commission's accreditation process ensures institutional accountability, self-appraisal, improvement, and innovation through peer review and the rigorous application of standards within the context of institutional mission.

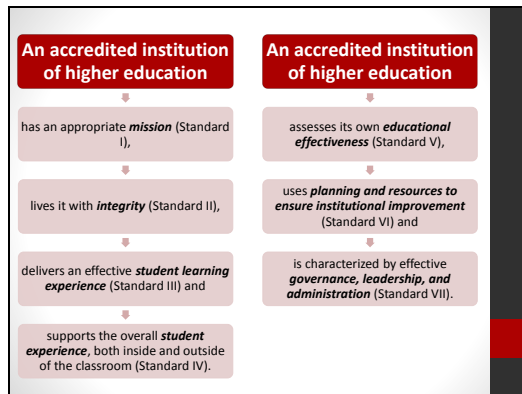
Slide 4



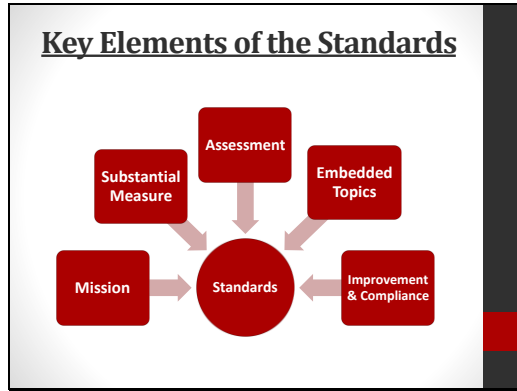
Slide 5



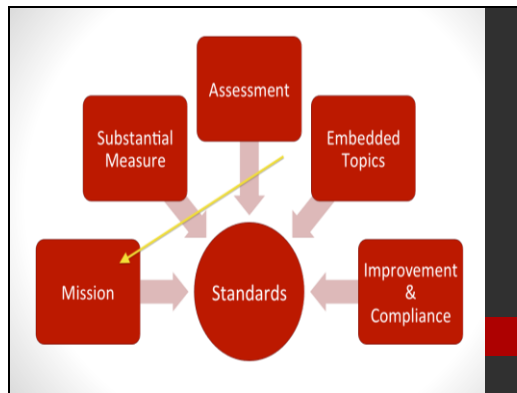
Slide 6



Slide 7



Slide 8



Slide 9

- MSCHE respects the diversity of institutions **Mission**
- Each institution articulates its own purposes, who it serves, what it intends to accomplish
- Mission is the context for all accreditation activities

Slide 10

Bloomsburg University
OF PENNSYLVANIA

Bloomsburg University of Pennsylvania is an inclusive comprehensive public university that prepares students for personal and professional success in an increasingly complex global environment.

University Values

Bloomsburg University students, faculty and staff value:

- Collaboration Community Critical thinking
- Diversity Excellence Integrity
- Knowledge Opportunity Respect
- Personal and professional growth

University's Vision

Bloomsburg University aspires to:

- be a premier public comprehensive university, recognized as a center of thinking, learning and academic excellence.
- anticipate and address the changing needs of the Commonwealth.
- be a diverse community that produces positive change.
- provide resources to maximize opportunities for success.

Slide 11



Slide 12

Overview of Standard I: Mission and Goals

Slide 13

Standard I: Mission and Goals

The institution's mission defines its purpose within the context of higher education, the students it serves, and what it intends to accomplish. The institution's stated goals are clearly linked to its mission and specify how the institution fulfills its mission.

MSCHE Publication Standards for Accreditation and Requirements of Affiliation
(Thirteenth Edition, 2014)

Slide 14

Criteria – Overview Standard I
Clearly defined mission and goals that ...

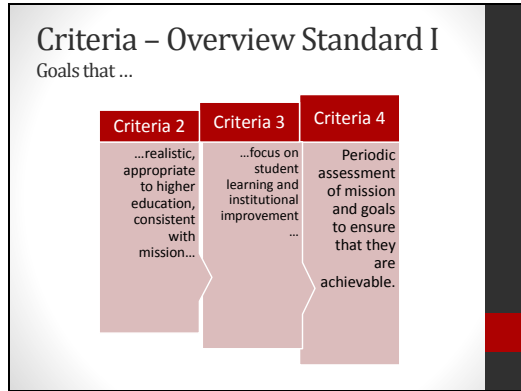
Criteria 1a	Criteria 1b	Criteria 1c
...are developed through appropriate collaborative participationaddress external as well as internal contexts...	...are approved and supported by governing body

Slide 15

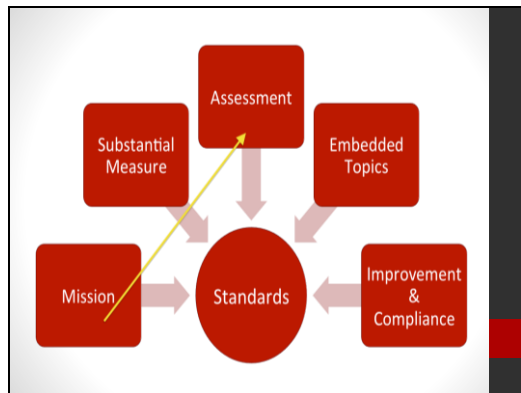
Criteria – Overview Standard I
Clearly defined mission and goals that ...

Criteria 1d	Criteria 1e	Criteria 1f	Criteria 1g
...guide faculty, administration and staff...	...include support of scholarly inquiry and creative activity...	...are publicized and widely known...	...are periodically evaluated...

Slide 16



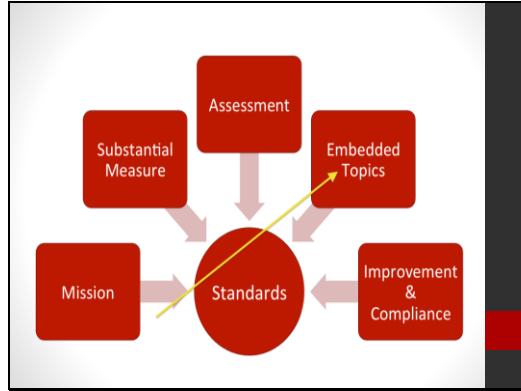
Slide 17



Slide 18

- ### Assessment in the 2014 Standards
- Assessment of institutional effectiveness and student learning should be well established
 - Revised standards emphasize the meaningful use of assessment results

Slide 19



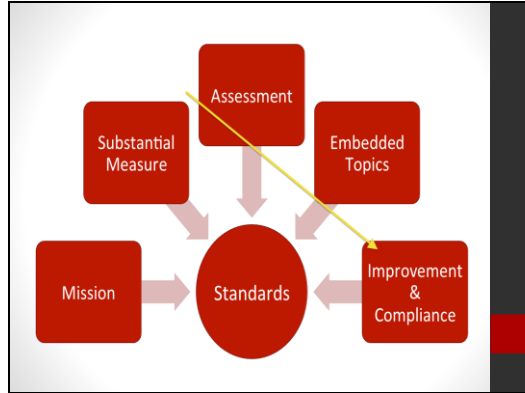
Slide 20

- ### Other Embedded Topics within the 2014 Standards
- Role of the faculty and other instructional personnel
 - Rigor and coherence regardless of level, format, or modality
 - Access and affordability
 - Institutional accountability in partnerships with third party providers

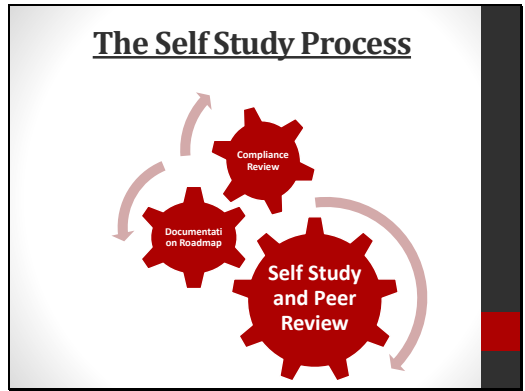
Slide 21

- ### Requirements of Affiliation
- | | | | |
|---|---|------------------------|----------------------------|
| 1. Authorized to operate | 2. Operates | 3. Graduated one class | 4. Communicates in English |
| 5. Regulatory compliance | 6. Policy compliance | 7. Mission and goals | 8. Evaluates programs |
| 9. Rigor, coherence, and assessment | 10. Integrated planning | 11. Resources | 12. Governance |
| 13. Governance and conflict of interest | 14. Governance and accurate institutional information | 15. Faculty | |

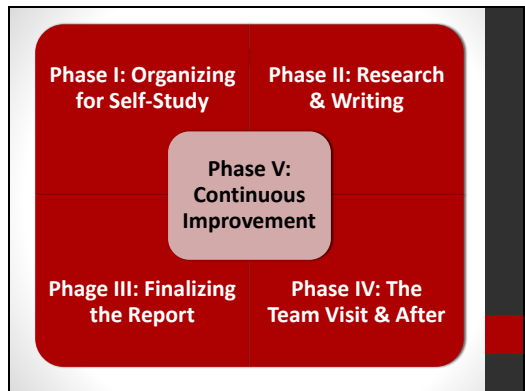
Slide 22



Slide 23



Slide 24



Slide 25

Resources



Additional resources available at www.msche.org

Slide 26