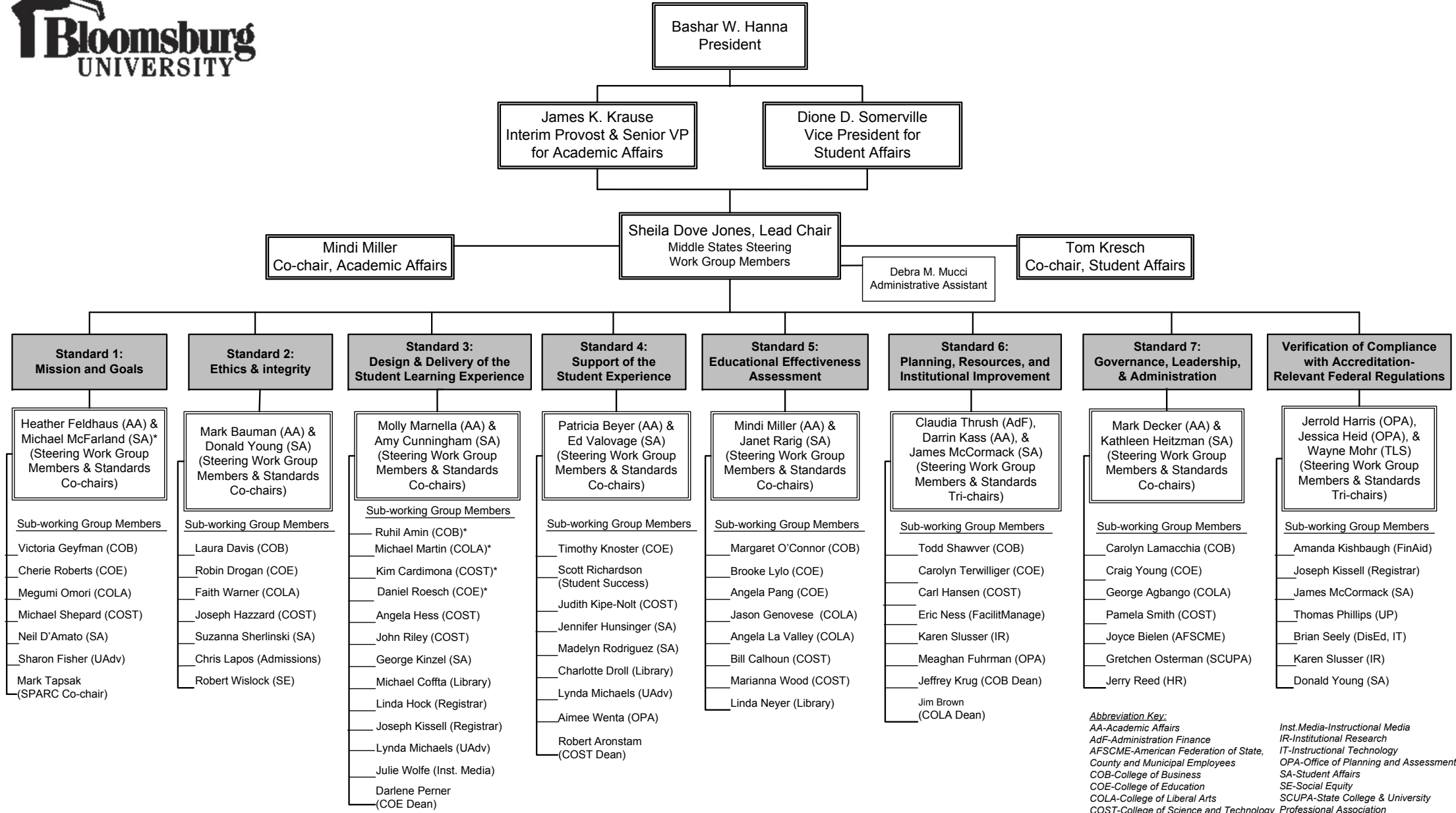




2018-2019 MIDDLE STATES SELF-STUDY – ORGANIZATIONAL & FUNCTIONAL CHART



*2017-2018 Curriculum Committee Chairs

Abbreviation Key:
 AA-Academic Affairs
 AdF-Administration Finance
 AFSCME-American Federation of State, County and Municipal Employees
 COLA-College of Liberal Arts
 COST-College of Science and Technology
 DisEd-Distance Education
 FacilitManage-Facilities Management
 FinAid-Financial Aid
 HR-Human Resources
 Inst.Media-Instructional Media
 IR-Institutional Research
 IT-Instructional Technology
 OPA-Office of Planning and Assessment
 SA-Student Affairs
 SE-Social Equity
 SCUPA-State College & University Professional Association
 TBA-To Be Announced
 TLS-Technology & Library Services
 UAdv-University Advancement
 UP-University Police